

# SR FOR CAMERA MODULE



## 產品特色 (Feature)

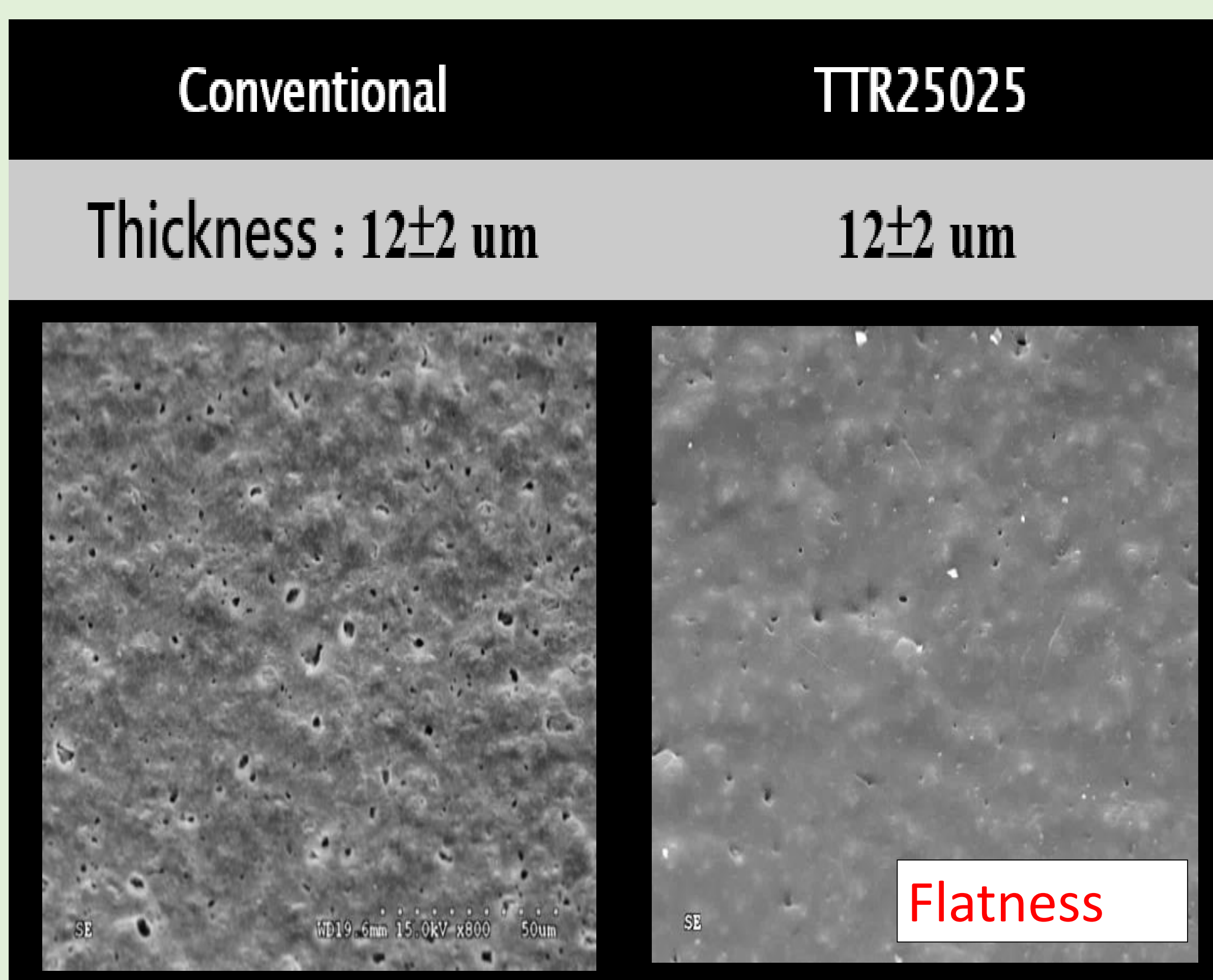
- 黑色霧面。(Black Matt type)
- 優異化金耐性( Excellent insulation resistance)
- 高耐電壓 (High breakdown voltage)



項目	PSR-4000 MEH	PSR-4000 ME06	PSR-4000 ME06S (TTR25025)
UL	PSR-4000EZ / CA-40DE	PSR-4000EZ / CA-40DE	—
適用膜厚 (Thickness)	20~30 um	20~30 um	40~50 um
曝光量 (mJ/cm <sup>2</sup> )	400~800	80~200	40~80
光澤度 (60°)	10±8	10±8	10±8
Dk / Df (1MHz, RT)	4.0 / 0.017	4.0 / 0.017	4.0 / 0.026
耐電壓性 (KV/mil)	3.1	3.2	3.6
化鎳鈹金 (Ni = 9.5um)	-	-	○

## • Properties

項目		PSR-4000 ME06	PSR-4000TTR25025
Sensitivity	Exp. (mJ/cm <sup>2</sup> )	80/100/200	40/60/80
	Resolution (μm)	100/80/70	90/80/70
Gloss Unit 光澤度 (60°)		10±8	10±8
H <sub>2</sub> SO <sub>4</sub> (10%)/RT*30min		○	○
HCl (10%)*30min		○	○
ENEPIG (Ni = 9.0um)		△	○



	SR thickness	Conventional		TTR25025	
ENEPIG	12±2 um	NG		PASS	
<b>Ni: 9.00um</b>					
Pd:0.05um					
Au:0.05um	20±2 um	NG		PASS	

